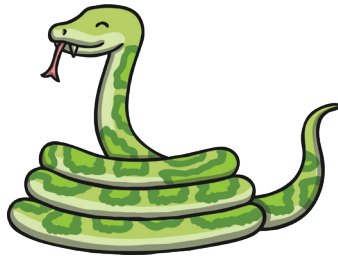


# Snakes and Ladders

## 2, 5 and 10 Times Tables

You will need...

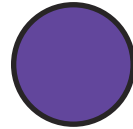
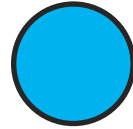
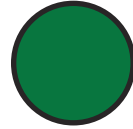
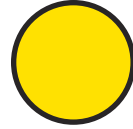
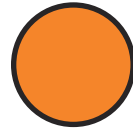
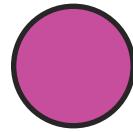
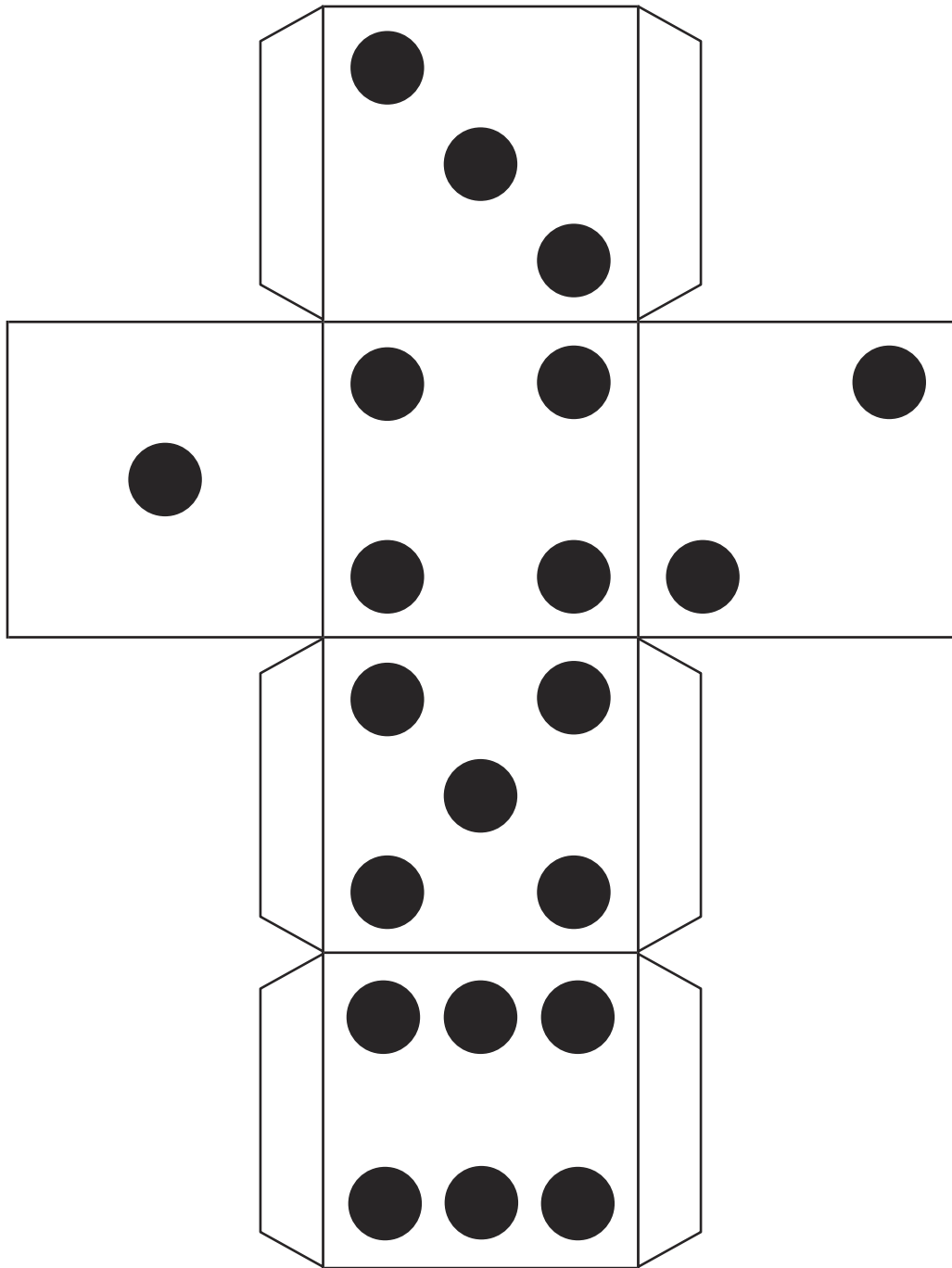
- The Snakes and Ladders Board Game board
- A dice
- A counter per player



How to play...

1. Players take it in turns to roll the dice. The player with the highest number goes first, the player with the second highest goes second and so on.
2. When it's their turn, players move their counter the number of spaces shown on the dice and answer the calculation they land on.
3. If the answer given to the calculation is correct, play continues as usual:
  - landing on a snake's head - the player slides their counter down the snake;
  - landing at the bottom of a ladder - the player moves their counter up the ladder.
4. If the answer given to the calculation is incorrect, the player misses a go.
5. The first player to reach the finish is the winner!

20 $2 \times 5 =$ 	21 $10 \times 6 =$ 	22 $5 \times 8 =$	23 $10 \times 3 =$ 	<b>Finish</b>
19 $2 \times 6 =$	18 $10 \times 2 =$ 	17 $2 \times 1 =$	16 $2 \times 12 =$	15 $10 \times 11 =$ 
10 $5 \times 9 =$ 	11 $2 \times 5 =$	12 $10 \times 9 =$	13 $5 \times 4 =$ 	14 $2 \times 10 =$
9 $10 \times 12 =$ 	8 $5 \times 10 =$ 	7 $5 \times 6 =$ 	6 $2 \times 7 =$	5 $5 \times 0 =$ 
<b>Start</b>	1 $2 \times 3 =$ 	2 $10 \times 4 =$	3 $5 \times 6 =$ 	4 $10 \times 7 =$ 



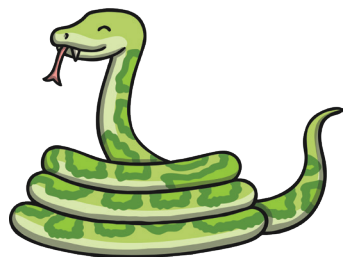
# Snakes and Ladders

## 2, 5 and 10 Times Tables

### Answers

You will need...

- The Snakes and Ladders Board Game board
- A dice
- A counter per player



How to play...

1. Players take it in turns to roll the dice. The player with the highest number goes first, the player with the second highest goes second and so on.
2. When it's their turn, players move their counter the number of spaces shown on the dice and answer the calculation they land on.
3. If the answer given to the calculation is correct, play continues as usual:
  - landing on a snake's head - the player slides their counter down the snake;
  - landing at the bottom of a ladder - the player moves their counter up the ladder.
4. If the answer given to the calculation is incorrect, the player misses a go.
5. The first player to reach the finish is the winner!

20 10	21 60	22 40	23 30	Finish
19 12	18 20	17 2	16 24	15 110
10 45	11 10	12 90	13 20	14 20
9 120	8 50	7 30	6 14	5 0
Start	1 6	2 40	3 30	4 70